

**TYPES**

- Type **A**: Thrust pad surface plane, without plastic cap
- Type **K**: Thrust pad surface plane, with plastic cap
- Type **P**: Thrust pad surface with detent, without plastic cap

**Thrust pad**

- Steel, blackened
- Stainless Steel AISI 304 **NI**

**Elastic ring**

Stainless Steel AISI 301

**Plastic cap (Polyacetal POM)**

- natural colour
- temperature resistant up to 100 °C

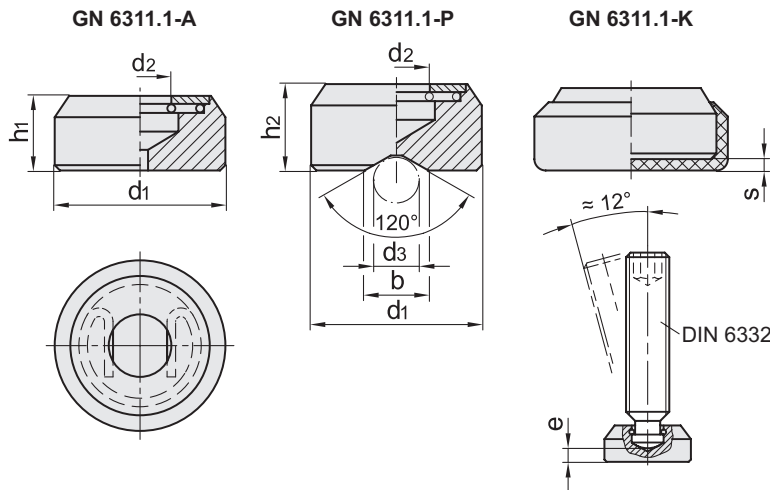
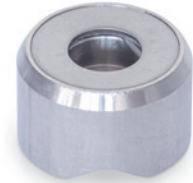
**FEATURES AND APPLICATIONS**

GN 6311.1 thrust pads are used to transmit clamping forces by using grub screws DIN 6332 (see page 636).

The retaining ring creates a coupling between the grub screw and the thrust pad.

They can be adapted on irregular or non-parallel surfaces, holding the thrust pad with respect to the clamping surface, while tightening the screw.

The plastic cap (type K) prevents damage to delicate workpieces.



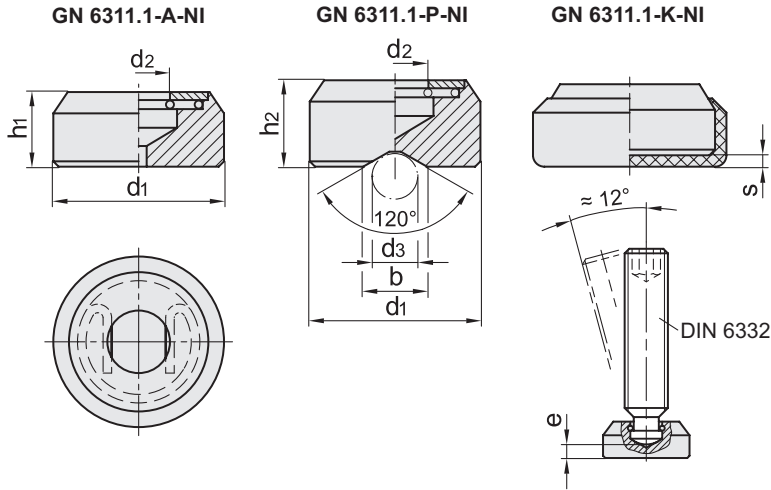
Conversion Table	
1 mm = 0.039 inch	
d1	
mm	inch
12	0.47
16	0.62
20	0.78
25	0.98
32	1.25
40	1.56

**GN 6311.1**

Code	Description	d1	d2+0.2	d3min.	d3max.	b	h1	h2	e	s	DIN 6332	△
GN.11955	GN 6311.1-12-A	12	5.2	-	-	-	6	-	1.5	-	M6	4
GN.11961	GN 6311.1-16-A	16	6.3	-	-	-	8	-	2.3	-	M8	11
GN.11965	GN 6311.1-20-A	20	9.2	-	-	-	10	-	2.6	-	M10 - M12	18
GN.11971	GN 6311.1-25-A	25	9.2	-	-	-	11	-	2.9	-	M10 - M12	34
GN.11975	GN 6311.1-32-A	32	12.5	-	-	-	14	-	4.5	-	M16	70
GN.11979	GN 6311.1-40-A	40	16.5	-	-	-	16	-	4.5	-	M20	125
GN.11957	GN 6311.1-12-P	12	5.2	7.5	16	8	-	9	4.5	-	M6	5
GN.11963	GN 6311.1-16-P	16	6.3	7.5	20	10	-	11	5.3	-	M8	13
GN.11967	GN 6311.1-20-P	20	9.2	7.5	24	12	-	13	5.6	-	M10 - M12	24
GN.11973	GN 6311.1-25-P	25	9.2	7.5	32	16	-	15	6.9	-	M10 - M12	43
GN.11977	GN 6311.1-32-P	32	12.5	7.5	44	22	-	19	9.5	-	M16	80
GN.11981	GN 6311.1-40-P	40	16.5	7.5	50	25	-	22	10.5	-	M20	130
GN.11956	GN 6311.1-12-K	12	5.2	-	-	-	6	-	-	1.5	M6	6
GN.11962	GN 6311.1-16-K	16	6.3	-	-	-	8	-	-	1.5	M8	12
GN.11966	GN 6311.1-20-K	20	9.2	-	-	-	10	-	-	1.5	M10 - M12	22
GN.11972	GN 6311.1-25-K	25	9.2	-	-	-	11	-	-	1.5	M10 - M12	35
GN.11976	GN 6311.1-32-K	32	12.5	-	-	-	14	-	-	1.5	M16	74
GN.11980	GN 6311.1-40-K	40	16.5	-	-	-	16	-	-	1.5	M20	155

**METRIC**

Standard machine parts



Conversion Table	
1 mm = 0.039 inch	
d1	
mm	inch
12	0.47
16	0.62
20	0.78
25	0.98
32	1.25
40	1.56

GN 6311.1-NI

INOX STAINLESS STEEL METRIC

Code	Description	d1	d2 +0.2	d3min.	d3max.	b	h1	h2	e	s	DIN 6332	⚖
GN.66721	GN 6311.1-12-A-NI	12	5.2	-	-	8	6	-	1.5	1.5	M6	4
GN.66726	GN 6311.1-16-A-NI	16	6.3	-	-	10	8	-	2.3	1.5	M8	11
GN.66731	GN 6311.1-20-A-NI	20	9.2	-	-	12	10	-	2.6	1.5	M10 - M12	18
GN.66736	GN 6311.1-25-A-NI	25	9.2	-	-	16	11	-	2.9	1.5	M10 - M12	30
GN.66741	GN 6311.1-32-A-NI	32	12.5	-	-	22	14	-	4.5	1.5	M16	70
GN.66746	GN 6311.1-40-A-NI	40	16.5	-	-	25	16	-	4.5	1.5	M20	127
GN.66723	GN 6311.1-12-P-NI	12	5.2	7.5	16	8	-	9	4.5	1.5	M6	5
GN.66728	GN 6311.1-16-P-NI	16	6.3	7.5	20	10	-	11	5.3	1.5	M8	10
GN.66733	GN 6311.1-20-P-NI	20	9.2	7.5	24	12	-	13	5.6	1.5	M10 - M12	22
GN.66738	GN 6311.1-25-P-NI	25	9.2	7.5	32	16	-	15	6.9	1.5	M10 - M12	35
GN.66743	GN 6311.1-32-P-NI	32	12.5	7.5	44	22	-	19	9.5	1.5	M16	74
GN.66748	GN 6311.1-40-P-NI	40	16.5	7.5	50	25	-	22	10.5	1.5	M20	161
GN.66722	GN 6311.1-12-K-NI	12	5.2	-	-	8	6	-	-	1.5	M6	6
GN.66727	GN 6311.1-16-K-NI	16	6.3	-	-	10	8	-	-	1.5	M8	13
GN.66732	GN 6311.1-20-K-NI	20	9.2	-	-	12	10	-	-	1.5	M10 - M12	24
GN.66737	GN 6311.1-25-K-NI	25	9.2	-	-	16	11	-	-	1.5	M10 - M12	44
GN.66742	GN 6311.1-32-K-NI	32	12.5	-	-	22	14	-	-	1.5	M16	88
GN.66747	GN 6311.1-40-K-NI	40	16.5	-	-	25	16	-	-	1.5	M20	161

Standard machine parts